

Quick Guide for P2T Service Portal

Not a member?

Don't have an Atrust account for P2T Converter Service yet? Please create one here. (You need an Atrust account to apply for this service on line.)

Create Account

1

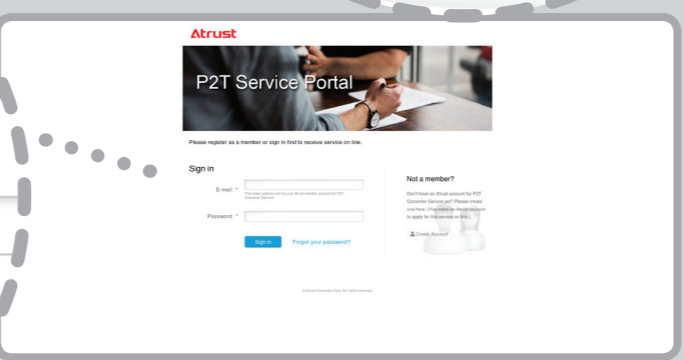
E-mail *

Password *

2

This email address will be your Atrust Converter Service

Sign in

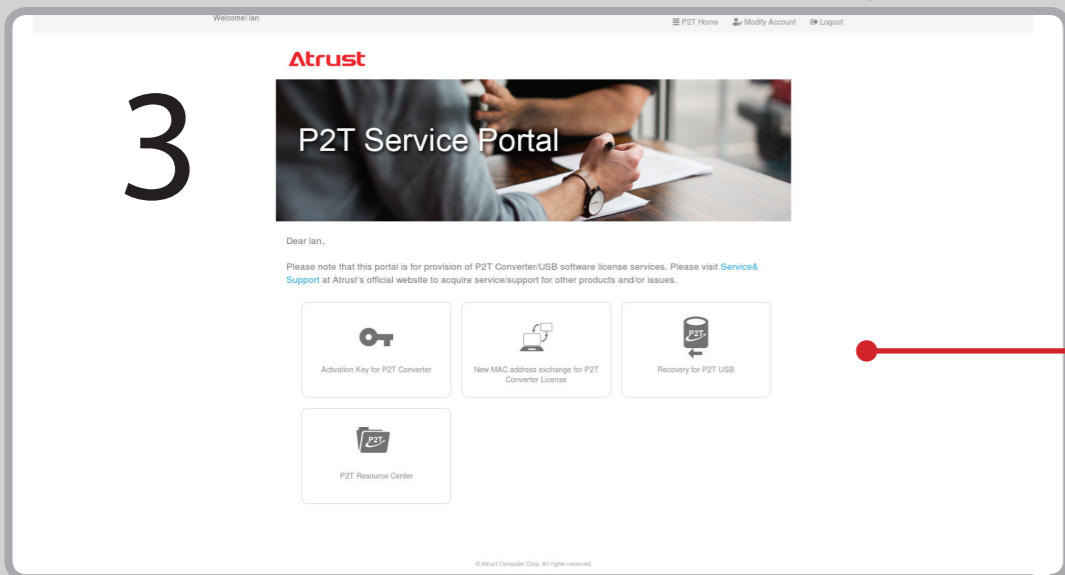


On any page, click to return Home page Click to modify Account information Click to log out



P2T Home Page

3



Activation Key for P2T Converter

Click to get and manage your P2T licenses with activation keys.

See **4** on the rear page for details.



New MAC address exchange for P2T Converter License

Click to transfer your P2T license from one device to another.

See **5** on the rear page for details.



Recovery for P2T USB

Click to restore a P2T USB when its data are damaged.

See **6** on the rear page for details.



P2T Resource Center

Click to get P2T information, tools, and related instructions for use.

4 Getting and Managing Your P2T Licenses with Activation Keys

Adding Activation Keys

To add an activation key to your account, please do the following:

NOTE

- You must add an activation key to associate that key with your account.

- On P2T Home, click **Activation Key for P2T Converter**.
- Click **Add new activation key here**, and then type your activation key.
- Click **Submit** to add that activation key to your account.

Generating Your P2T Licenses

To generate your P2T licenses, please do the following:

- On P2T Home, click **Activation Key for P2T Converter**.
- In **Find your activation key**, choose your activation key, and then click **Submit**.
- On the page for that activation key, provide *MAC addresses* of devices you want to generate a P2T license. To do so, click **Add new MAC**, and then you can:

- Type and then submit *MAC addresses*,
- Upload a *CSV file of MAC addresses* generated by *Atrust Network Computer Scanner*.

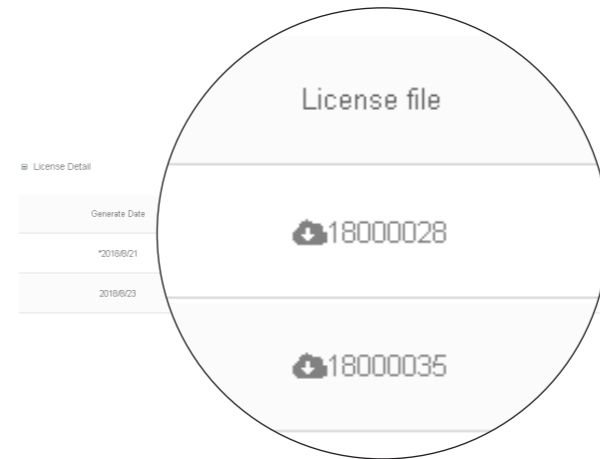
NOTE

- You can get this tool and instructions on its use at **P2T Home > P2T Resource Center**.

Downloading Your P2T Licenses

To download your P2T licenses, please do the following:

- On P2T Home, click **Activation Key for P2T Converter**.
- In **Find your activation key**, choose your activation key, and then click **Submit**.
- Click to expand **License Detail** on next page, and then click a desired license file to download it.



6 Restoring Your P2T USB

Getting the License File Required for Recovery

To get the license file required for restoring your P2T USB, please do the following:

- On P2T Home, click **Recovery for P2T USB**.
- Type the serial number of your P2T USB.

NOTE

- You can find the serial number on your P2T USB flash drive as shown on the web page.

- Click **Submit**. The license file required for recovery will be sent to your email address.

Getting the Firmware File and Tool Required for Recovery

To get the firmware file and tool required for restoring your P2T USB, please do the following:

- On P2T Home, click **P2T Resource Center > Download**.
- Download the desired firmware file for P2T USB and *Atrust P2T USB Repair Tool*.

Restoring Your P2T USB

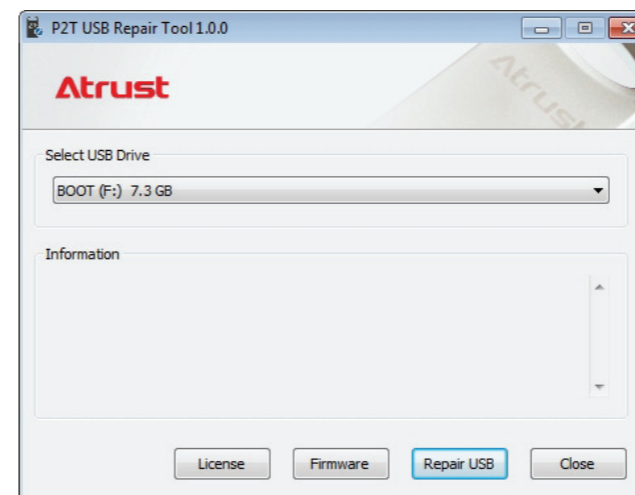
To restore your P2T USB, please do the following:

- Install *Atrust P2T USB Repair Tool* on your computer.

NOTE

- Supported Operating Systems**
 - Windows 7, 8.1, 10
 - Windows Server 2008 R2, 2012 R2
 - Windows Server 2016

- Copy P2T USB *license* and *firmware* files to your computer.
- Insert your P2T USB to the computer.
- Click the shortcut on your computer to launch *Atrust P2T USB Repair Tool*.



- Click the drop-down menu to select your P2T USB flash drive.

5 Transferring Your P2T License from One Device to Another

To transfer your P2T license from one device to another, please do the following:

- On P2T Home, click **New MAC address exchange for P2T Converter License**.
- Read the Declaration, check **I have read and understood the terms and conditions**, and then click **AGREE** to enter the next page.
- Type the old MAC address for the old device and the new for another, and then click **Submit** to transfer your P2T license from one device to another.

- Click **License** to locate the license file.
- Click **Firmware** to locate and unzip the firmware file. It may take a few minutes to complete this task.
- Click **Repair USB** to restore your P2T USB. When it's done, a Success message as shown below will pop up to notify you.

